

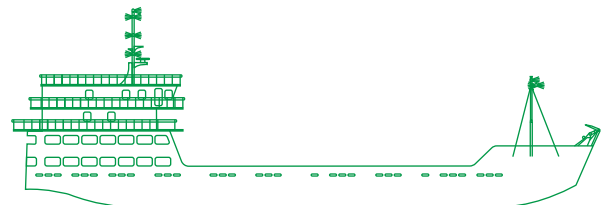


مبارك البحرية Mubarak Marine



Mubarak 20 Shallow draft landing craft

A 61.5 metre LOA landing craft with a 7.2 x 5.2 metre ramp, and clear deck space of 660 square metres that extends below the bridge of the vessel, providing good utilisation of deck space.



Registration

Year of build	2020
Builder	Dubai Shipbuilding & Engineering
Port of registry	Moroni
Flag	Union of Comoros
Official number	1300796
Call sign	D6A2742
IMO number	9912969
Class notation	I - HULL, MACH, general cargo ship, costal area
Class	Bureau Veritas
Class number	16613K
Operator	Mubarak Marine LLC

Dimensions

Length overall	61.5 m
Length BP	59.2 m
Breadth moulded	13 m
Depth moulded	3.3 m
Draft	2.2 m

Machinery/propulsion

Main engines	2x Yanmar 6AYM-wet M-rating @ 1900 rpm (610 kw), 829 bhp with Yanmar gear box RR 4.89:1
Main generator	Yanmar 6HAL2-wht series @ 1500 rpm (250 kva-200 kw), 272 bhp
Emergency generator	Caterpillar C4.4 DITA, serial number JIZ00769 117.5 kw @ 1800 rpm
Deck generator	Weichai, WP4D100E200 @ 1500 rpm, 80 kw-100 kva
Bow thruster	1x 180 kw @ 1480 rpm electric motor driven
Oily water separator	OCB-E-0-0-1 Ocean Clean GmbH +b bilge pump
Sewage treatment plant	1x Selmar Italy model Blue Sea 7000 ltr/day, capacity = 18 persons
Steering system	Electro hydraulic steering system by SAS Lecomble et Schmitt (Utr-FRA)

Tonnage

GRT	1027 t
NRT	308 t
Deadweight	615 t

Cargo deck

Deck cargo area	660 m ²
Deck strength	5 t/m ²
Container (20x8 ft)	24 nos (first tier)

Performance

Speed	10 knots
Ramp winch motors	2 nos
A/C units	2x 5 t, 1x 10 t

Capacities

Fire pump	40 m ³ /hr @ 30 m head
Fuel oil cargo pump	22.5 m ³ /hr @ 35 m head (375 lpm)
Fuel oil transfer pump	5 m ³ /hr @ 30-35 head
Emergency fire pump	60 m ³ /hr @ 43 m head
Fresh water pump	30 m ³ /hr @ 40 m head
Ballast water pump	2x 60 m ³ /hr @ 43 head
Bilge pump	2x 30 m ³ /hr @ 15 m head

Landing deck particular

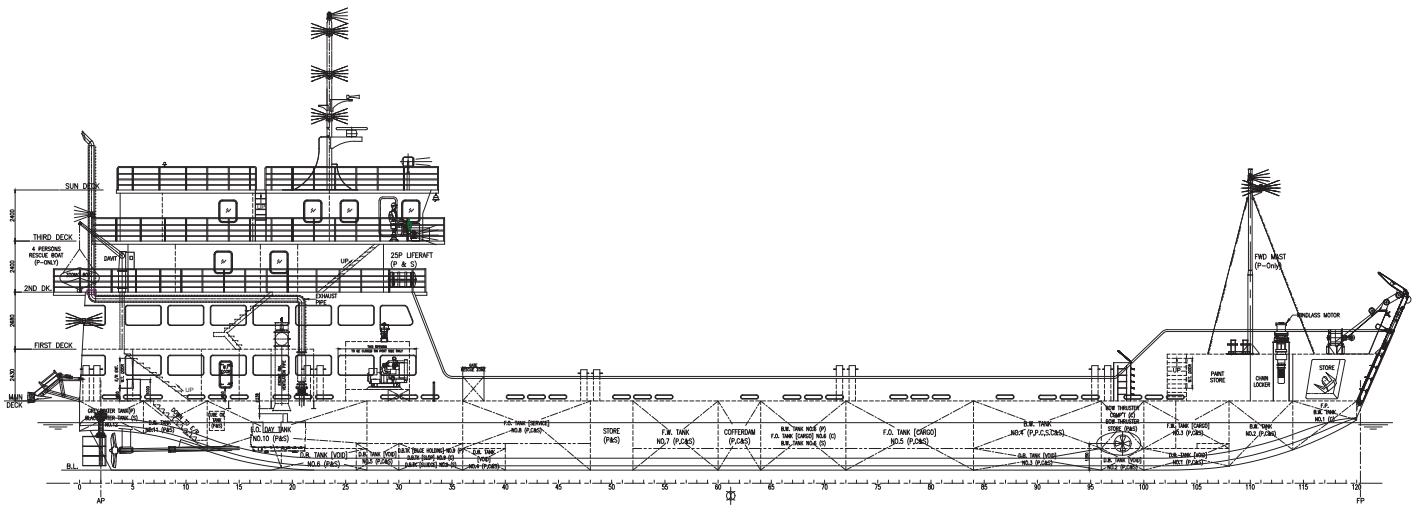
Ramp door	7.2 m x 5.2 m (length x width)
-----------	--------------------------------

Anchor

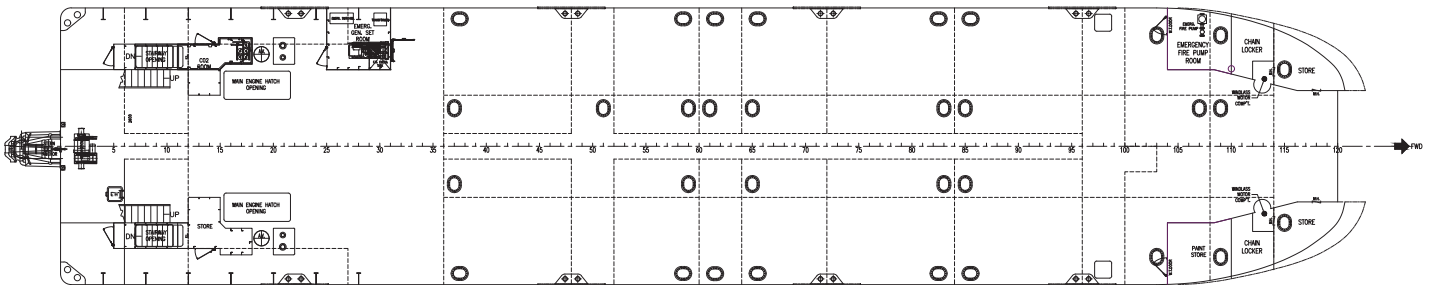
Fwd anchor windlass	2x DZC 7000-2 EP-I/P 28L by Data Hidroli Makina San. A.S., Istanbul, Turkey
---------------------	--

Tank capacities

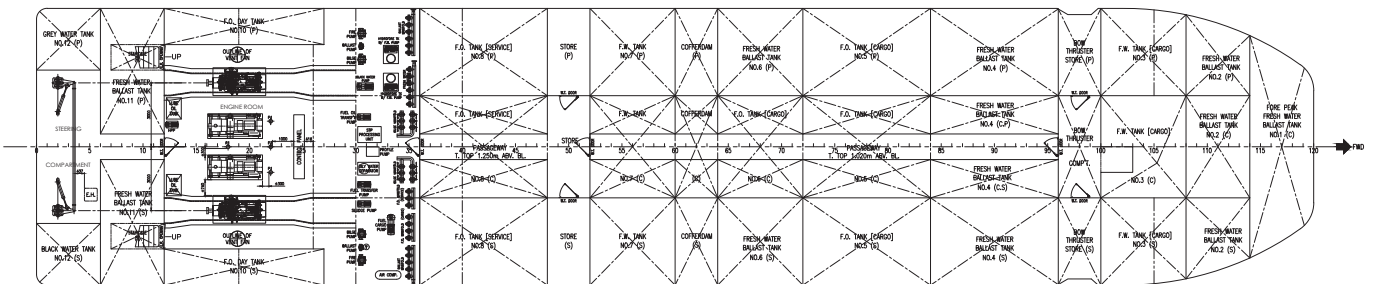
FO tank	250 m ³
FW tank	142 m ³
FW ballast tank	417 m ³
FO cargo tank	258 m ³
FW cargo tank	97 m ³
LO tank	1 m ³
Grey water tank	10 m ³
Black water tank	10 m ³
Dirty oil	13 m ³
Sludge tank	13 m ³



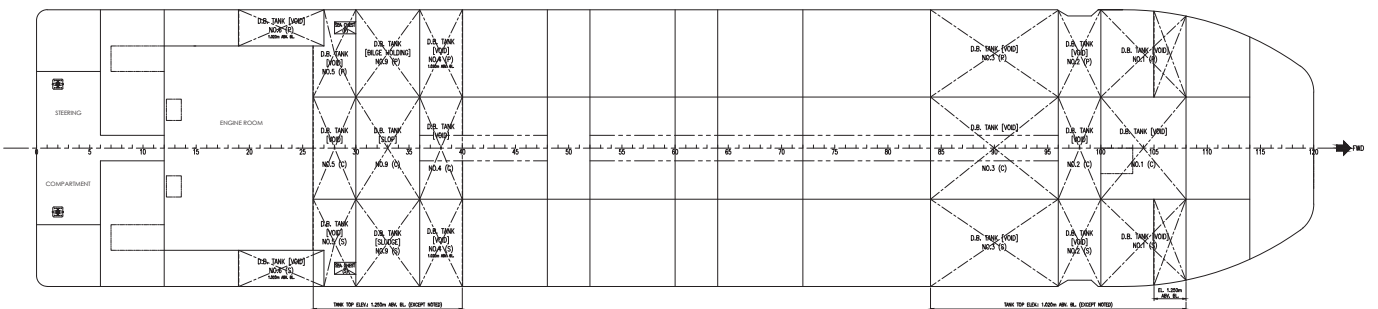
Outboard profile



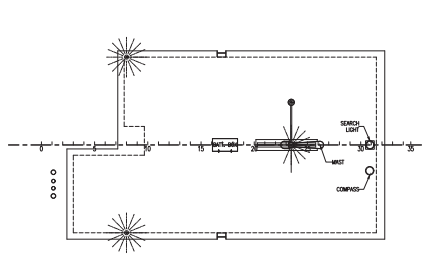
Main deck plan



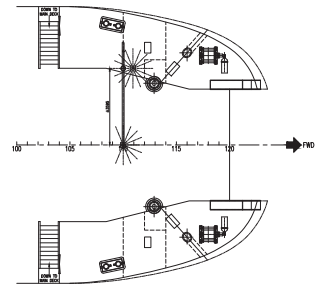
Below main deck plan



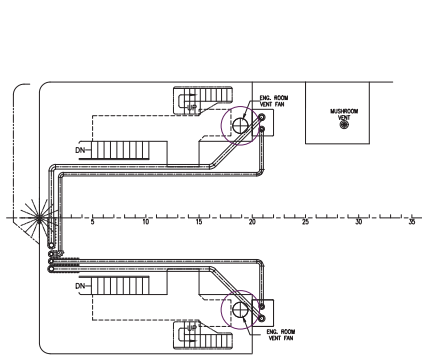
Double bottom tank plan



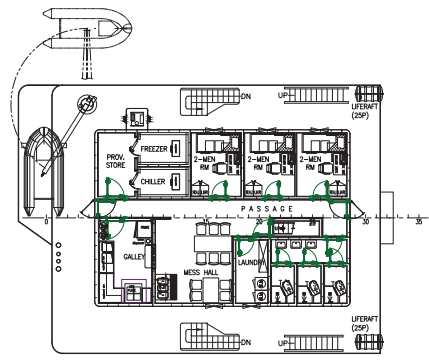
Sun deck



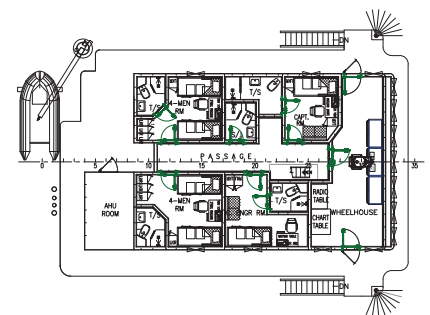
Forecastle deck



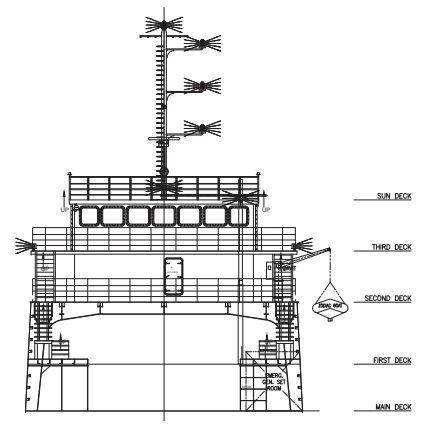
First deck



Second deck



Third deck



Transverse section

Mubarak Marine LLC | PO Box 7220 | Dubai Maritime City | UAE
 T+971 4 586 5200 | F +971 4 586 5299 | marketing@mubarak.ae | mubarakmarine.com

Revision July 2023 | All technical details are provided as a guide only and are subject to owner's changes without notice