

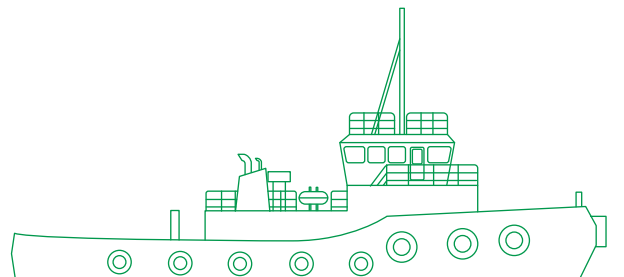


مبارك البحرية
Mubarak Marine



Volans Offshore tug

This multipurpose anchor handling and offshore towing tug is powered by two Yanmar marine diesel engines. At 29 m in length, the tug packs a bollard pull of over 27 tons and holds a crew of 13.



Registration

Year of build	2004
Builder	Labroy Shipbuilding & Engineering PTE Ltd
Port of registry	Dubai
Flag	UAE
Official number	5438
Call sign	A6E3103
IMO number	9298856
Class	Lloyds Register
Operator	Mubarak Marine LLC

Dimensions

Length overall	29 m
Length BP	26.5 m
Beam moulded	9 m
Depth moulded	4.3 m
Draft designed	3.5 m
Draft maximum	3.9 m

Machinery/propulsion

Main engines	2x Yanmar M220 EN, 1200 bhp @ 800 rpm c/w gearbox
Steering gear	Wagner LB2-4.0-3.5-BB2
Propellers	4x bladed semi skew, diameter 2000 mm, 2x fixed pitch
Bow thrusters	1x 1.5 t fixed pitch bow thruster

Tonnage

GRT	247 mt
NRT	74 mt
Deadweight	148.4 mt

Performance

Speed	11 knots
Bollard pull	27 mt
Endurance	About 35 days (at maximum rpm)
Range	About 3168 NM at 11k Average

Capacities

Fuel oil	185 m ³
Fresh water	51 m ³
Lube oil	2.3 m ³
Dirty oil	2.3 m ³

Navigation/communication equipment

Magnetic compass	1x Daiko Keiki, model SR 150 PK
Radar	1x Kodon-MDC-1040, 1x Samyung SMR-3600
Echo sounder	1x Hondex, model HE-770
GPS navigator	1x Kodon KGP-920, 1x C-Map, HGP 2800 Haiyang
Gyrocompass	1x Sperry MK-37
EPIRB	1x GME model: MT 403FF-S503E
SART	2x Samyung-SAR-9
Navtex receiver	1x Samyung-SNX-200
VHF-FM transceiver	2x Samyung-STR-6000A
VHF (portable)	3x Submersible HX-370S
GMDSS	Samyung-SRG 1150DN, MF/HF DSC radio equipment
Thuraya	Telephone/fax

Firefighting/safety equipment

Life rafts	2x 20 persons, inflatable
Life buoys	8 nos
Life jackets	17 nos
CO ² flooding system	Yes
Fireman outfit	1
Emergency fire pump	1 set

Deck equipment

Anchor and chain	2x 480 kg, chain 275 mm x 19 mm diameter U2 grade
------------------	---

Cargo deck

Area	70 m ²
Deck strength	5 t/m ²

Towing and anchor handling equipment

Anchor handling/towing winch	10 mt @ 10 m/min, electro hydraulic, wire 36 mm diameter x 1000 m, brake holding 70 t at first layer static
Stern roller	Fitted

Cargo discharge capacity

Fuel/gas oil	8 m ³ /hr @ 30 m head
Potable water	8 m ³ /hr @ 30 m head

Electric power generation

Diesel generator engine alternator 6CTA 8.3, 2x 145 KW, Leroy Somer LSA M47.IL9,
120 KW, 415VAC/50Hz/3Ph

Fuel consumption

Towing	5.1 mt
Free running	4.1 mt

Fresh water consumption (crew)

2 mt/day

Load/discharge connections

Fuel oil	Female-3" Kamlock
Potable water	Female-2.5" Kamlock
Reefer connections	2x 240/1/50 32A, 2x 415/3/50 63A

Accommodation

Single cabin	3x 1 person
4-person cabin	1x 4 persons
6-person cabin	1x 6 persons
Total	13 persons





BUREAU VERITAS

DBA.4.22.1382.171222.IR.002.MS

INSPECTION REPORT

Reference: Name of the Company: M/s MUBARAK MARINE, DUBAI, UAE
Place of Inspection: On Board VOLANS, Mubarak Jetty DMC, Dubai UAE
Date of Test: 17.12.2022
Date of next Inspection: Not Applicable
Item Description: Bollard Pull test
IMO No.: 9298856
At the request of M/s MUBARAK MARINE, DUBAI, UAE the undersigned surveyor to Bureau Veritas, acting within the general conditions of services of our society which governs such interventions, did attend at On Board VOLANS, Mubarak Jetty DMC, Dubai UAE to inspect the said item as per client request and reports as under:

Scope: Witnessing Bollard pull test as per client request
Vessel Name: VOLANS
IMO No.: 9298856
Port of registry: DUBAI
Draft (FWD / AFT): FWD=3.2 m / AFT 3.6 m
Depth: 13.0 m
Tug stern to shore: 220m
Under keel depth: 15.7 m
Dia. of wire rope: 36 mm
Max. Wind speed: 7.0 knots
Machinery: 2x895 KW
KW: 1790 KW

Sustained Bollard pull: 26.8 MT
Maximum Bollard pull: 27.03 MT
Conclusion: The bollard pull test was witnessed as per the client request. This report is made without prejudice for the ends and purposes for which it was designed.

Issued at Dubai on 17th of Dec, 2022

For BUREAU VERITAS: Mohammed Sarfaraz, Inspector to Bureau Veritas
Reviewed by: Bibin Lal, Inspector to Bureau Veritas

Form No.: DXB-IVS-015 Page 1 of 2

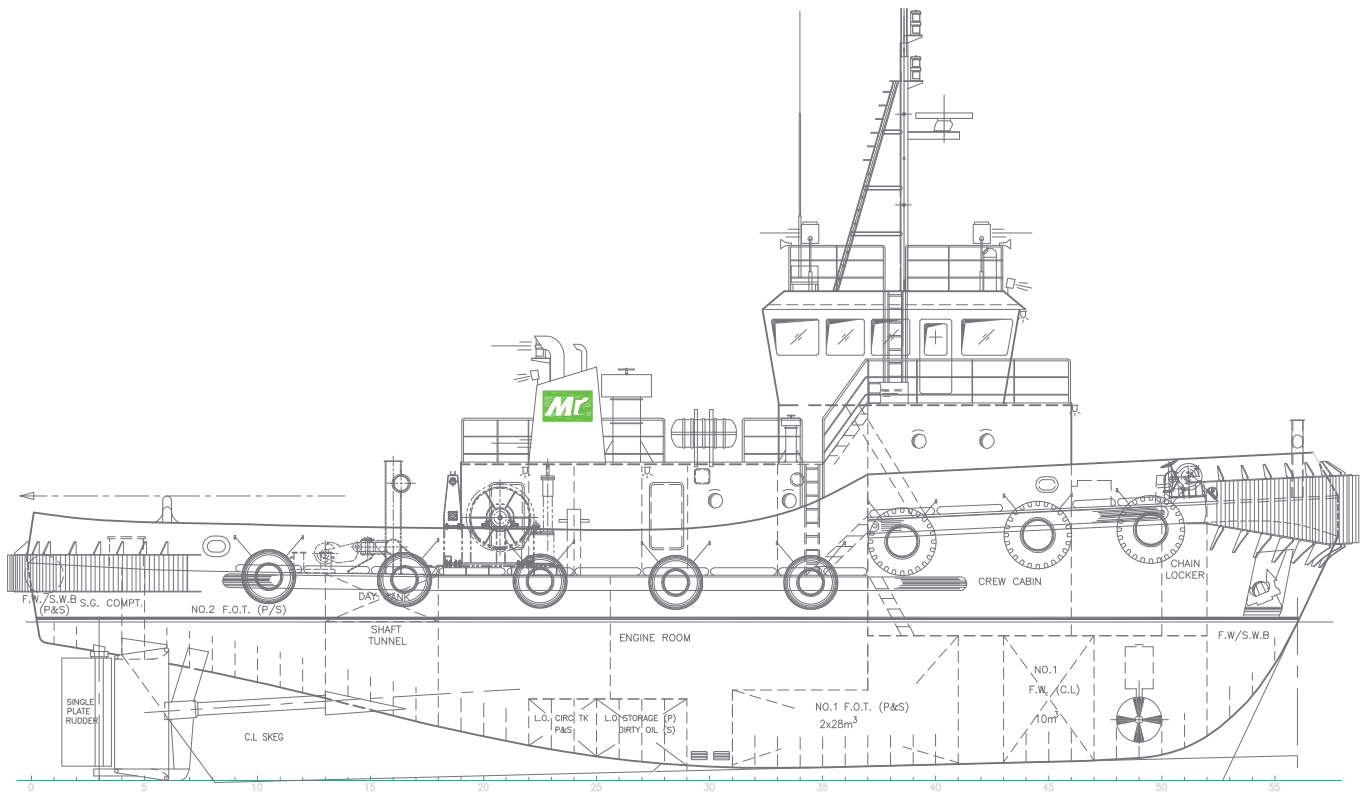
Bureau Veritas S.A. Dubai Branch, P.O.Box 8110, Dubai, UAE. Tel No. +971 4 342381/342382 Fax No. +971 4 342381/342382 Email: bureau.veritas@bureauveritas.com

Table with 2 columns: Test data and Pull @100% (10 minutes). Rows include ASD Port - RPM (700), ASD STBD RPM (700), Exhaust Temp average Main Diesel Generator (MDG#1 -390 C, MDG#2 -400 C), and test data from 1:00 to 10:00 showing pull values between 26.80 MT and 27.00 MT.

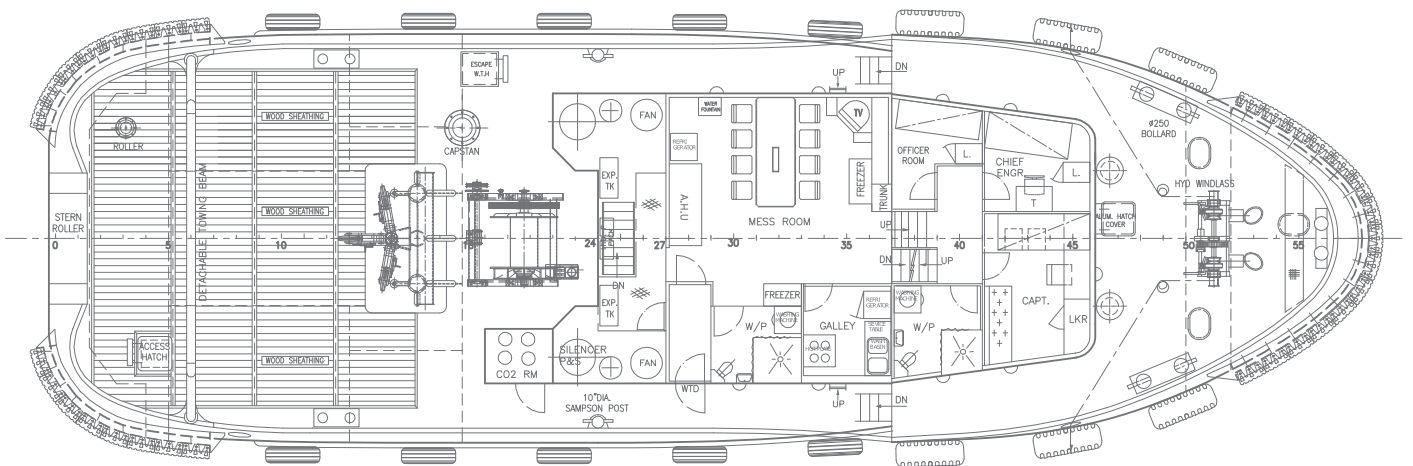
Load cell calibration Report No.: 04-C443173, Dated: 04.08.2022 (Load cell serial No.: 109333, Capacity: 75 t)

Bureau Veritas S.A. Dubai Branch, P.O.Box 8110, Dubai, UAE. Tel No. +971 4 342381/342382 Fax No. +971 4 342381/342382 Email: bureau.veritas@bureauveritas.com

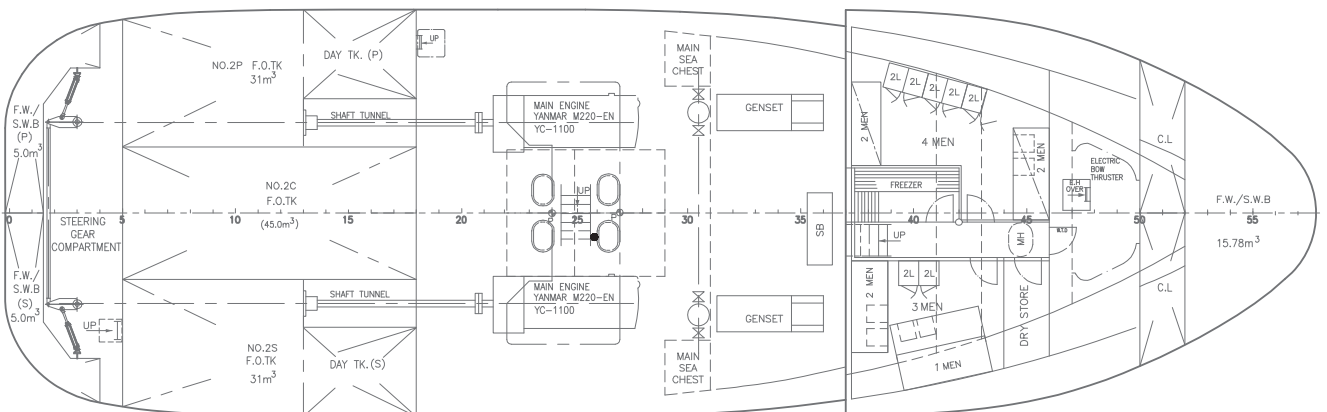
Page 2 of 2



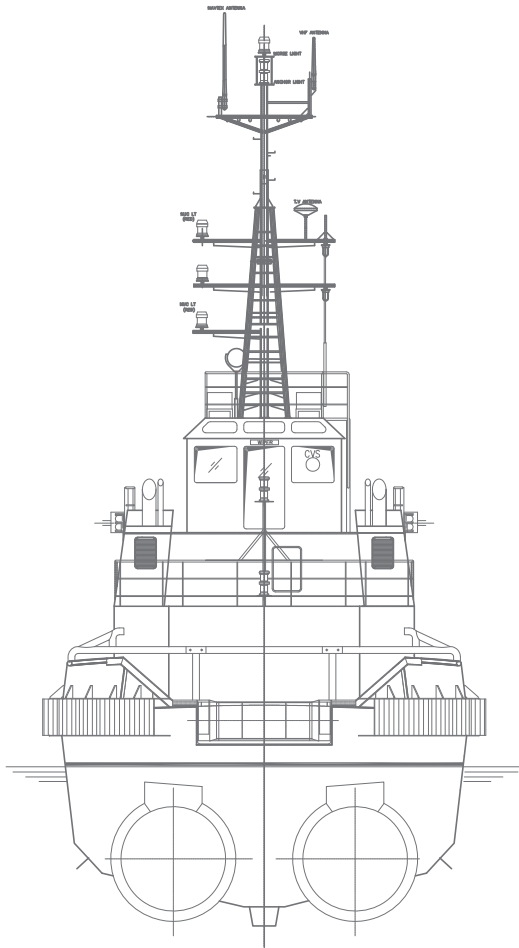
Outboard profile



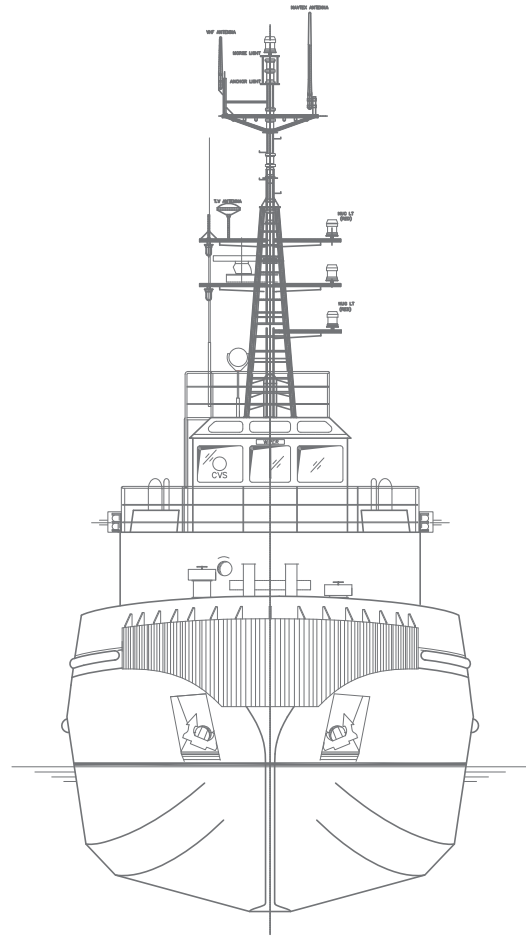
Main deck plan



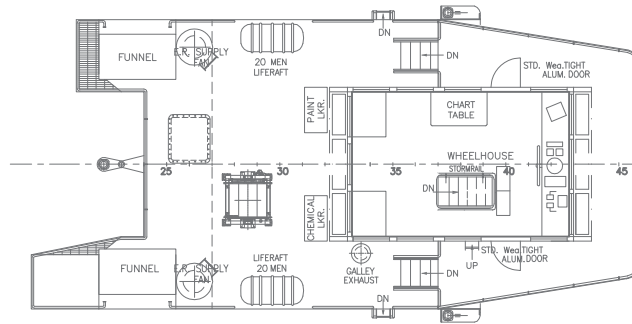
Below main deck plan



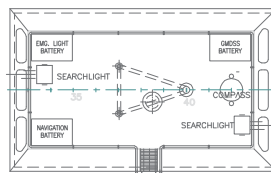
Stern view



Front view



Wheelhouse deck



Wheelhouse top

Mubarak Marine LLC | PO Box 7220 | Dubai Maritime City | UAE
 T+971 4 586 5200 | F +971 4 586 5299 | marketing@mubarak.ae | mubarakmarine.com

Revision April 2024 | All technical details are provided as a guide only and are subject to owner's changes without notice